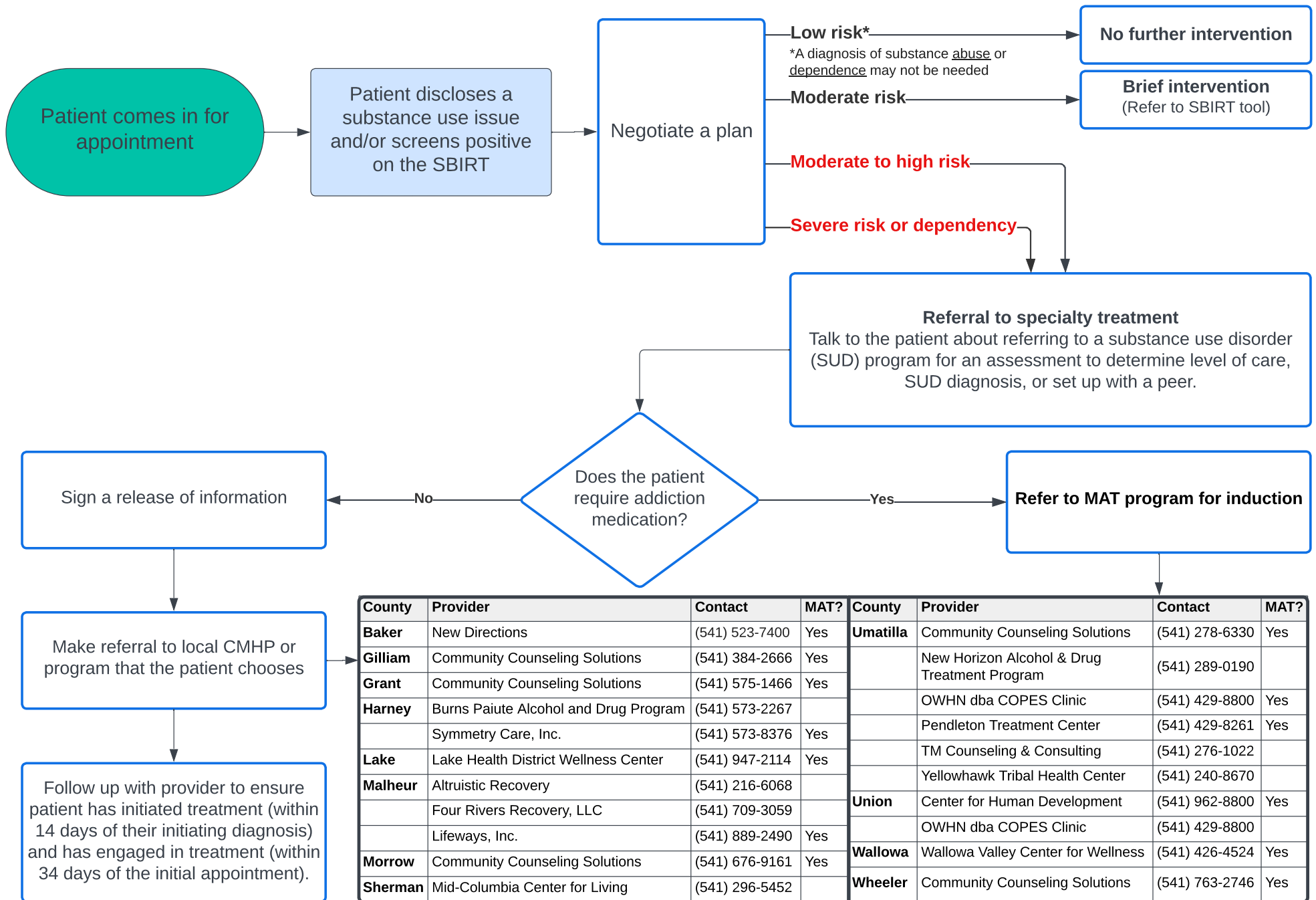


Initiation and Engagement of Substance Use Treatment (IET) Workflow



County	Provider	Contact	MAT?	County	Provider	Contact	MAT?
Baker	New Directions	(541) 523-7400	Yes	Umatilla	Community Counseling Solutions	(541) 278-6330	Yes
Gilliam	Community Counseling Solutions	(541) 384-2666	Yes		New Horizon Alcohol & Drug Treatment Program	(541) 289-0190	
Grant	Community Counseling Solutions	(541) 575-1466	Yes		OWHN dba COPEs Clinic	(541) 429-8800	Yes
Harney	Burns Paiute Alcohol and Drug Program	(541) 573-2267			Pendleton Treatment Center	(541) 429-8261	Yes
	Symmetry Care, Inc.	(541) 573-8376	Yes		TM Counseling & Consulting	(541) 276-1022	
Lake	Lake Health District Wellness Center	(541) 947-2114	Yes		Yellowhawk Tribal Health Center	(541) 240-8670	
Malheur	Altruistic Recovery	(541) 216-6068		Union	Center for Human Development	(541) 962-8800	Yes
	Four Rivers Recovery, LLC	(541) 709-3059			OWHN dba COPEs Clinic	(541) 429-8800	
	Lifeways, Inc.	(541) 889-2490	Yes	Wallowa	Wallowa Valley Center for Wellness	(541) 426-4524	Yes
Morrow	Community Counseling Solutions	(541) 676-9161	Yes	Wheeler	Community Counseling Solutions	(541) 763-2746	Yes
Sherman	Mid-Columbia Center for Living	(541) 296-5452					